



Certification Central

Training Educators and Behavior Technicians

North Dakota's 1st Alternative Educator Preparation Program

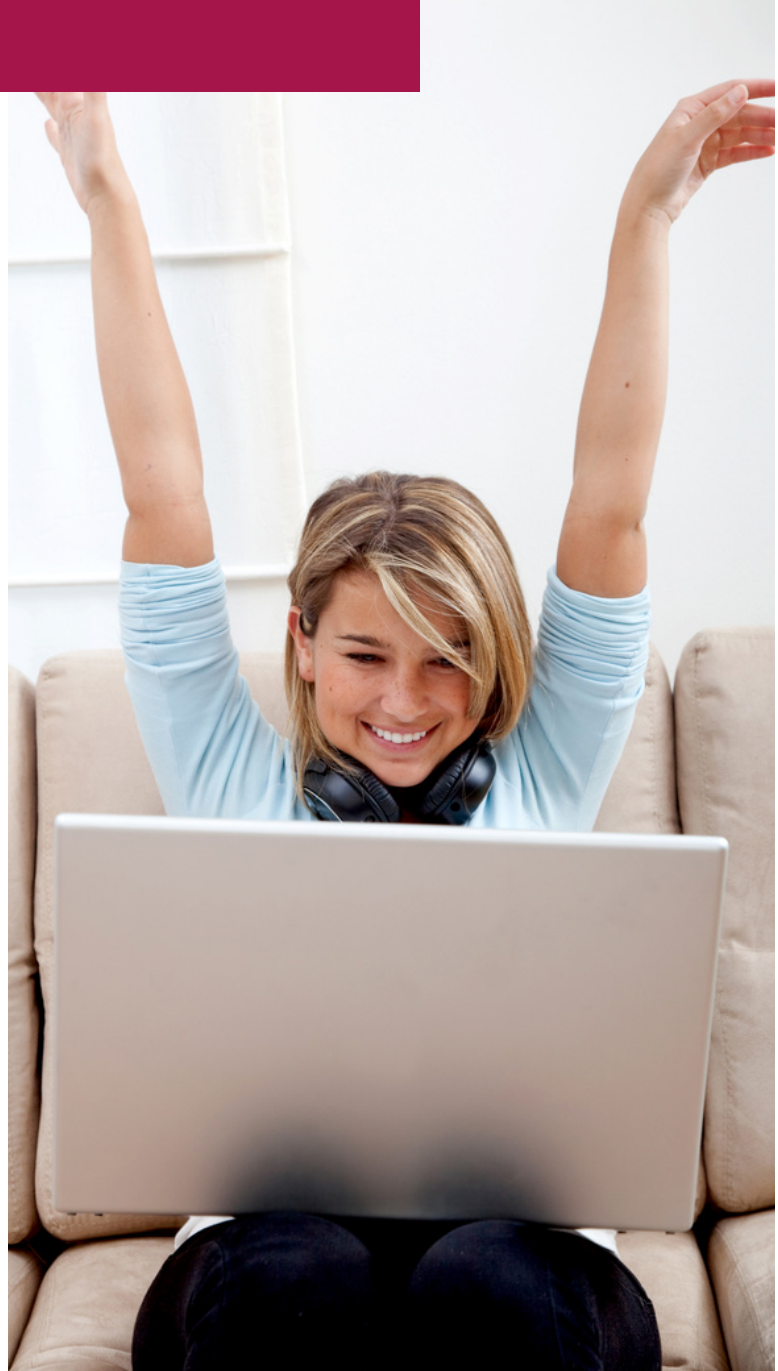
2023-2024 Training Catalog

Our Mission

The mission of Certification Central is to provide an alternative program for licensing educators, certifying special education technicians, and training behavior technicians using a competency-based model that is affordable and accessible.

Certification Central encourages learners to enroll at anytime and to move at their own pace, which supports those with life experiences to accelerate their program of study. Asynchronous online instruction makes this program borderless and attainable.

Certification Central is aligned with national teaching standards and the Behavior Analyst Certification Board. Learners will demonstrate competencies through authentic, performance-based assessments to make them career ready.



About Us

Katherine Terras
Co-Founder & Chief
Executive Officer



Mark Reinhart
Co-Founder & Chief
Operating Officer

Dr. Katherine Terras

kat@certcen.cc

Hello everyone! I have been an educator for 26 years. I practiced as a paraprofessional, public school teacher, and university professor. I believe in alternatives for training educators and behavior technicians in order to offer a variety of pathways for diverse learners. Mark and I were both raised in rural North Dakota, as well as have children attending a rural school. We understand the unique needs of training and retaining educators, in addition to meeting the community's behavioral health needs.

Mark Reinhart

mark@certcen.cc

Hello! I have had many life experiences from ranching to parenting, which have led me to this chapter with Certification Central. As a continuous learner, I am committed to creating training opportunities for those who learn differently and for those who have busy lives and are longing for a lane change in life. I have a desire to open opportunities for those living in rural and remote areas. Katherine and I want to help reduce the teacher shortage in these areas while making a career in teaching affordable by reducing the financial burden of school loans.

Special Education Licensure Program

Master Equivalent



Certification Central's program is approved by the North Dakota Education Standards and Practices Board. Upon completion, you will be eligible for full, initial licensure as a special education teacher. Disability-specific content (LD, ED, ID, ASD) is integrated into modules for an inclusive framework. CC is a practice-based program with a robust clinical practice requirement for an authentic, career-ready experience. CC offers a saving of 60-70% compared to other state programs as there are no separate charges for introductory & disability-specific content; everything is embedded using high-impact practices. Master Equivalent will be on your transcript, with completion of a scholarly capstone portfolio. There are 3 pathways for those seeking full licensure.



Admission Criteria

- Bachelor's degree in any field from an accredited institution
- Cumulative (or junior/senior year) GPA of 2.75
- FBI background check
- Three professional letters of recommendation
- Resume
- Two essays

Program of Study 1
Prior Degree in Early Childhood or Elementary Education Cost \$8600
(excluding textbooks)

SPECIAL EDUCATION CORE (integrates LD, ED, ID, ASD content)

SPED Module 1 Learner Development & Individual Learning/Cultural Differences

3 Credit Equivalent - \$900

SPED Module 2 Legal/Ethical Practices & Professional Learning

3 Credit Equivalent - \$900

SPED Module 3 Curricular Content Knowledge & Individual Education Plans

3 Credit Equivalent - \$900

SPED Module 4 Assessment & Measurement

3 Credit Equivalent - \$900

SPED Module 5 Understanding & Managing Behavior

3 Credit Equivalent - \$900

SPED Module 6 Instructional Planning, Strategies, & Transition

3 Credit Equivalent - \$900

SPED Module 7 Collaboration, Consultation, & Supervision

3 Credit Equivalent - \$900

SPED Module 8 Inclusive Learning Environments

3 Credit Equivalent - \$900

SPED 550 Special Education Internship (on-the-job & traditional options are available)

2-7 Credit Equivalent - \$400-\$1400

SPED 900 Scholarly Capstone Portfolio

2-3 Credit Equivalent - \$400 to \$600

Program of Study 2
Prior Degree in Middle or Secondary Education Cost \$10,400
(excluding textbooks)

SPECIAL EDUCATION CORE (integrates LD, ED, ID, ASD content)

SPED Module 1 Learner Development & Individual Learning/Cultural Differences

3 Credit Equivalent - \$900

SPED Module 2 Legal/Ethical Practices & Professional Learning

3 Credit Equivalent - \$900

SPED Module 3 Curricular Content Knowledge & Individual Education Plans

3 Credit Equivalent - \$900

SPED Module 4 Assessment & Measurement

3 Credit Equivalent - \$900

SPED Module 5 Understanding & Managing Behavior

3 Credit Equivalent - \$900

SPED Module 6 Instructional Planning, Strategies, & Transition

3 Credit Equivalent - \$900

SPED Module 7 Collaboration, Consultation, & Supervision

3 Credit Equivalent - \$900

SPED Module 8 Inclusive Learning Environments

3 Credit Equivalent - \$900

SPED 550 Special Education Internship (on-the-job & traditional options are available)

2-7 Credit Equivalent - \$400-\$1400

SPED 900 Scholarly Capstone Portfolio

2-3 Credit Equivalent - \$400 to \$600

PROFESSIONAL EDUCATION CORE

ED Module 10 Reading Methods: Elementary

3 Credit Equivalent - \$900

ED Module 11 Math Methods: Elementary

3 Credit Equivalent - \$900



Program of Study 3
No Education Degree Cost \$11,3000
(excluding textbooks)

SPECIAL EDUCATION CORE (integrates LD, ED, ID, ASD content)

SPED Module 1 Learner Development & Individual Learning/Cultural Differences

3 Credit Equivalent - \$900

SPED Module 2 Legal/Ethical Practices & Professional Learning

3 Credit Equivalent - \$900

SPED Module 3 Curricular Content Knowledge & Individual Education Plans

3 Credit Equivalent - \$900

SPED Module 4 Assessment & Measurement

3 Credit Equivalent - \$900

SPED Module 5 Understanding & Managing Behavior

3 Credit Equivalent - \$900

SPED Module 6 Instructional Planning, Strategies, & Transition

3 Credit Equivalent - \$900

SPED Module 7 Collaboration, Consultation, & Supervision

3 Credit Equivalent - \$900

SPED Module 8 Inclusive Learning Environments

3 Credit Equivalent - \$900

SPED 550 Special Education Internship (on-the-job & traditional options are available)

2-7 Credit Equivalent - \$400-\$1400

SPED 900 Scholarly Capstone Portfolio

2-3 Credit Equivalent - \$400 to \$600

PROFESSIONAL EDUCATION CORE

ED Module 9 Pedagogy: Art and Science of Teaching

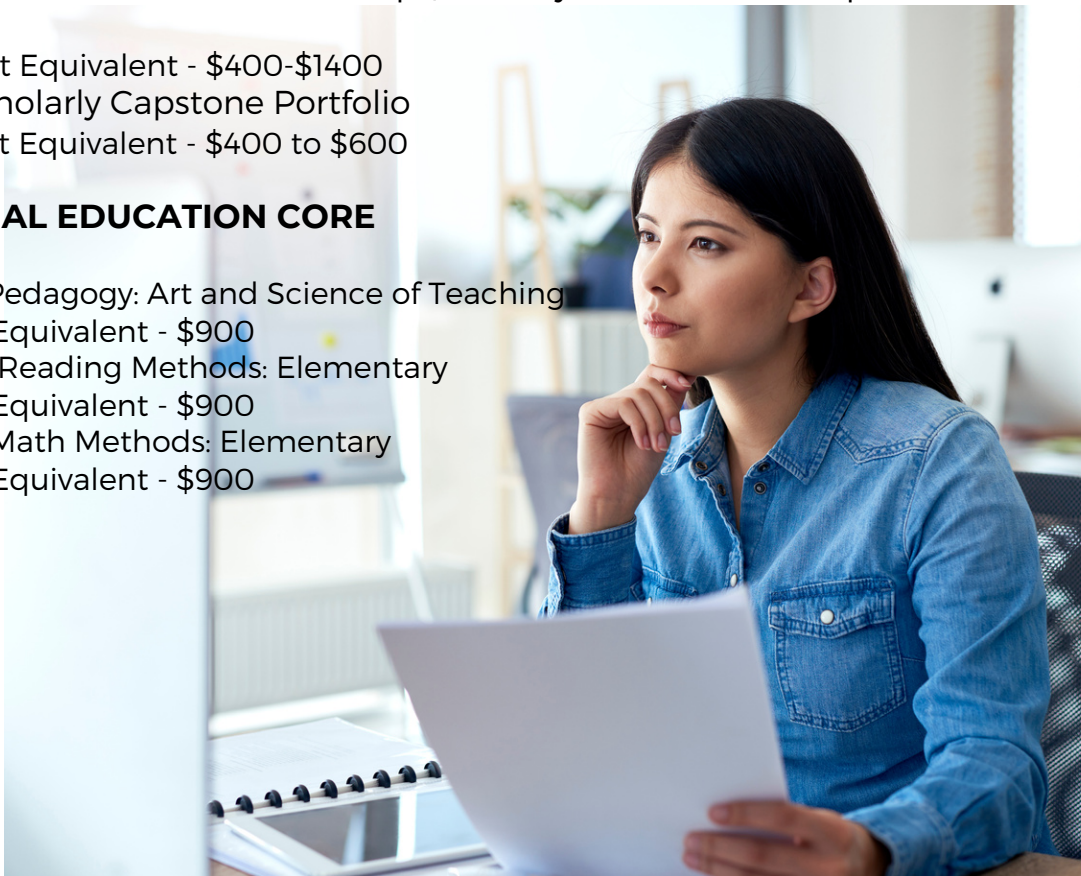
3 Credit Equivalent - \$900

ED Module 10 Reading Methods: Elementary

3 Credit Equivalent - \$900

ED Module 11 Math Methods: Elementary

3 Credit Equivalent - \$900



What can a Special Education Technician do?

A special education technician works under the supervision of a licensed special education teacher. Because Technicians have formal training in special education, they may be responsible for the following: (a) conduct academic and behavioral screenings following specified screening protocols developed by the supervising special education teacher; (b) perform documented tasks developed by the supervising special education teacher; (c) document student progress toward meeting goals/objectives and report this information to the supervising special education teacher; (d) assist the supervising special education teacher with regulatory paperwork as directed; (e) participate in multidisciplinary team meetings with a special education teacher or a special education provider; (f) prepare materials, assist with scheduling, and maintain space or equipment; and/or (g) complete other duties as assigned by the supervising special education teacher in consultation with the local administrator. Technicians cannot be a teacher of record; consequently, they may not complete the following: (a) make independent decisions regarding changes to a student's individualized education program (IEP); (b) conduct and interpret evaluations consisting of standardized diagnostic test/formal assessments unless otherwise qualified to do so, and/or (c) disclose confidential information orally or in writing unless authorized by the supervising special education teacher.

Special Education Technician Requirements

To obtain a certificate of completion as a special education technician, the North Dakota Department of Public Instruction requires the following training:

- 40-semester hours of college education or an equivalent under Century Code 15.1-13-10 in the area of special education that aligns with the Council for Exceptional Children preparation standards for paraeducators, including; learner development and individual differences, legal/ethnic practices, behavior management, curricular content knowledge, assessment, instructional planning and strategies, and collaboration; and
- A two-credit transcribable practicum minimum of one hundred clock-hours of fieldwork experience which is supervised by a licensed special education teacher.

SPED Technician

Program of Study

This program is comprised of a Special Education Core and a Special Education Technician Core. The Special Education Core is comprised of a 15-credit equivalent that provides learners the foundational knowledge of special education. The Special Education Technician Core is a 25-credit equivalent that equips students with the skills and dispositions to become a successful special education technician. Certification Central is a practice-based program that leverages on-the-job training by adding a lab to each module. This provides learners the opportunity to anchor their learning into an applied, educational setting, which can be completed while on-the-job in an educational setting.

Module	Title	Credit Equivalent
Special Education Core		
SPED Module 1	Learner Development & Individual Learning/Cultural Differences	3
SPED Module 1L	Learner Development & Individual Learning/Cultural Differences Lab	2
SPED Module 2	Legal/Ethical Practices & Professional Learning	3
SPED Module 2L	Legal/Ethical Practices & Professional Learning Lab	2
SPED Module 7	Collaboration, Consultation, & Supervision	3
SPED Module 7L	Collaboration, Consultation, & Supervision Lab	2
Special Education Technician Core		
SPED TECH 101	Individualized Education/Family Service Programs	3
SPED TECH 101L	Individualized Education/Family Service Programs Lab	2
SPED TECH 102	Behavior Management in Educational Settings	3
SPED TECH 102L	Behavior Management in Educational Settings Lab	2
SPED TECH 103	Curriculum Based Evaluations for Assessment	3
SPED TECH 103L	Curriculum Based Evaluations for Assessment Lab	2
SPED TECH 104	High Leverage Practices for High Incidence Disabilities	3
SPED TECH 104L	High Leverage Practices for High Incidence Disabilities Lab	2
SPED TECH 110	Special Education Technician Practicum	7
Total Credit Equivalent:		42

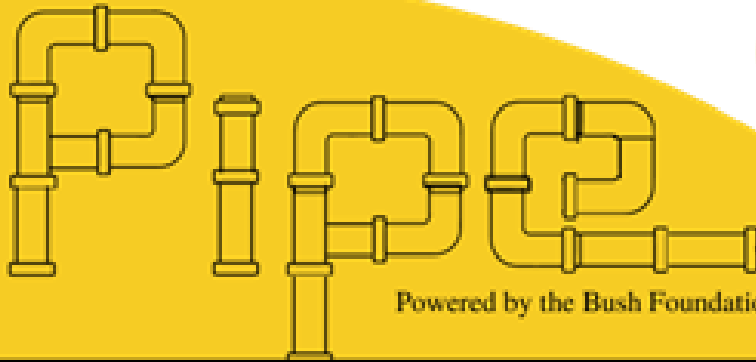
Cost of Program

The total cost of this program is \$7700.

Program Completion

Upon completion, you will be eligible to apply for a certificate of completion as a special education technician from the North Dakota Department of Public Instruction. You will be issued an official, postsecondary education transcript.

Certification Central (CC) is an alternative certification program leading to full certification as a Special Education Technician. CC is competency-based and aligned to national Council for Exceptional Children standards. Learners demonstrate competencies through authentic, performance-based assessments to make them career-ready.



Powered by the Bush Foundation through



Minot State University
Dakota College at Bottineau
Certification Central

Planning Initiative to Prepare Educators for Licensure in ND (special) Education

Certification Central and Minot State University's Course Crosswalk



MSU Courses Already Completed from CC SPED Technician Program

- SPED 110 Introduction to Exceptional Children-3 cr
- SPED 141 Development of Young Children-2 cr
- SPED 201 Applied Behavior Analysis for Teachers-3 cr
- SPED 233 Experience In SPED-1 cr
- SPED 310 Intro to Intellectual Disability and ASD-3 cr
- SPED 410 Intro Learning & Emotion/Behavior Disab-3 cr
- SPED 420 Inclusive Practices-3 cr
- SPED 445 Collaboration in Special Education-3 cr
- PSY 255 Child & Adolescent Psychology-3 cr or
SPED 140 Human Development-3 cr
- ED 260 Educational Psychology-2 cr
- ED 260L Clinical I
- ED 282 Managing the Learning Environment-2 cr
- ED 282L Clinical II-0.5 cr
- ED 284 Teaching Diverse Learners-2 cr
- ED 321L Clinical IV-0.5 cr
- ED 323L Clinical V-0.5 cr

MSU Remaining Coursework for Completion of the Special Education Major

- ELED 352 Foundations of Reading- 3 cr
- MATH 277 Mathematics for Elementary Teachers-3 cr
- SPED 202 Intro to Sensory Disabilities-3 cr
- SPED 302 Language and Communication Interventions-3 cr
- SPED 340 Assessment in SPED-4 cr
- SPED 379 Leadership in SPED-3 cr with ED 284L Clinical III 0.5
- SPED 441 Methods for High Incidence Disabilities-3 cr
- SPED 442 Methods for Low Incidence Disabilities-3 cr
- SPED 444 Transition to Adult Life-3 cr
- SPED 494 Practicum in Special Education-1 cr (not 4 credits)
- SS 283 Diversity in America-3 cr
- ED 320 Curriculum, Planning & Assessment-2 cr
- ED 322 Data Driven Integrated Instruction-2 cr
- ED 324L Fall Experience
- ED 380 Technology in Teaching-2 cr
- ED 484 Student Teaching Seminar: K12-2 cr
- ED 495 Student Teaching-5 cr (typically 10 cr)

Note: The transfer credits from CC are approved as a whole package from MSU and not by individual courses. Scholarships are not transferable across programs.

Minot State University's Academic Catalog:
<https://catalog.minotstateu.edu/undergraduate/collegeofeducationandhealthsciences/departmentofspecialeducation/special/#bachelorsinspecialeducationtext>

Project PIPELINE



Certification Central to Minot State University BSEd in Special Education Stackable Program of Study Sample (Cost: Approximately \$29,500 tuition)

General Education Requirements

Required Core	Foundational Content	Developmental Content
ENG 110 ENG 120 COMM 110 MATH 103, 104 or 210	Humanities 1 Humanities 2 Lab Science 1 Lab Science 2 Social Science 1 Social Science 2 History	Development Content is met through required coursework listed on this grid, plus PSR3: Wellness (choice of student).

Check it out here



Behavior Intervention Specialist Endorsement

CERTIFICATION CENTRAL WILL OFFER COURSEWORK REQUIRED FOR THE SPECIAL EDUCATION BEHAVIOR INTERVENTION SPECIALIST ENDORSEMENT. THE REQUIREMENTS ARE AS FOLLOWS:

SPECIAL EDUCATION CORE

SPED MODULE 2: LEGAL/ETHICAL PRACTICES & PROFESSIONAL LEARNING - 3 CREDIT EQUIVALENT - \$900

SPED MODULE 3: CURRICULAR CONTENT KNOWLEDGE & INDIVIDUAL EDUCATION PLANS - 3 CREDIT EQUIVALENT - \$900

SPED MODULE 4: ASSESSMENT & MEASUREMENT
3 CREDIT EQUIVALENT - \$900

SPED MODULE 5: UNDERSTANDING & MANAGING BEHAVIOR
3 CREDIT EQUIVALENT - \$900

SPED MODULE 7: COLLABORATION, CONSULTATION, & SUPERVISION
3 CREDIT EQUIVALENT - \$900

BEHAVIOR INTERVENTION SPECIALIST CORE

BEHAVIOR MODULE 1: BEHAVIOR ASSESSMENT & MEASUREMENT
INTEGRATES 20 HOURS OF CLINICAL FIELDWORK - 3 CREDIT EQUIVALENT - \$900

BEHAVIOR MODULE 2: METHODS & APPLICATIONS FOR BEHAVIOR SUPPORT & PROGRAMMING
INTEGRATES 20 HOURS OF CLINICAL FIELDWORK - 3 CREDIT EQUIVALENT - \$900

BEHAVIOR MODULE 3: BEHAVIOR ETHICS, SUPERVISION, & CONSULTATION
INTEGRATES 20 HOURS OF CLINICAL FIELDWORK - 3 CREDIT EQUIVALENT - \$900

BEHAVIOR MODULE 4: BEHAVIOR RESEARCH & INQUIRY
INTEGRATES 20 HOURS OF CLINICAL FIELDWORK - 3 CREDIT EQUIVALENT - \$900

BEHAVIOR 550: BEHAVIOR SPECIALIST INTERNSHIP
**THIS REQUIREMENT IS INTEGRATED ACROSS ALL 4 MODULES - 2 CREDIT EQUIVALENT - \$400

SPED 900 SCHOLARLY CAPSTONE PORTFOLIO (OPTIONAL)
**YOU CAN CHOOSE TO TAKE THE ENDORSEMENT PROGRAM AS A MASTER'S EQUIVALENT THAT IS POSTED ON YOUR TRANSCRIPT - 2-3 CREDIT EQUIVALENT - \$400-\$600



**Turn it into a
master's
equivalent**



HOW IT WORKS

CERTIFICATION CENTRAL IS A SELF-PACED, ENROLL ANYTIME PROGRAM. TO GET STARTED, SIMPLY COMPLETE THE APPLICATION. YOU WILL NEED TO UPLOAD UNOFFICIAL TRANSCRIPTS/CERTIFICATES FROM ALL INSTITUTIONS ATTENDED.

IF YOU DO NOT HAVE THE SPECIAL EDUCATION CORE COURSEWORK, YOU WILL BEGIN WITH SPED MODULE 2 LEGAL/ETHICAL PRACTICES & PROFESSIONAL LEARNING. IF YOU DO HAVE THIS CORE, YOU WILL BEGIN WITH BEHAVIOR MODULE 1 METHODS & APPLICATIONS FOR BEHAVIOR SUPPORT & PROGRAMMING. AFTER YOU HAVE DEMONSTRATED ALL COMPETENCIES WITH PROFICIENCY, YOU WILL ADVANCE TO THE NEXT MODULE. AS DENOTED ABOVE, THE PRACTICUM/INTERNSHIP REQUIREMENT IS INTEGRATED THROUGHOUT EACH MODULE IN ORDER TO CONNECT CONTENT TO AUTHENTIC, REAL-LIFE EXPERIENCES.

Registered Behavior Technician Training

This training is designed for paraprofessionals who want to become Registered Behavior Technicians or who simply want to understand more about managing behavior.

Training is based on the RBT Task List (2nd ed.) and is designed to meet the 40-hour training requirement for RBT certification. It is offered independent of the Behavior Analyst Certification Board.

The focus of this training is application of behavior analytic knowledge and skills to make you career ready as an effective RBT! Each module is interactive to illustrate behavioral principles and to apply skills in real-life settings.



MODULE 1

Behavior Basics

MODULE 2

Measurement

MODULE 3

Assessment

MODULE 4

Skill Acquisition

MODULE 5

Behavior Reduction

MODULE 6

Documentation and Reporting

MODULE 7

Professional Conduct and Scope of Practice

Training Time: 45 Hours

Pricing

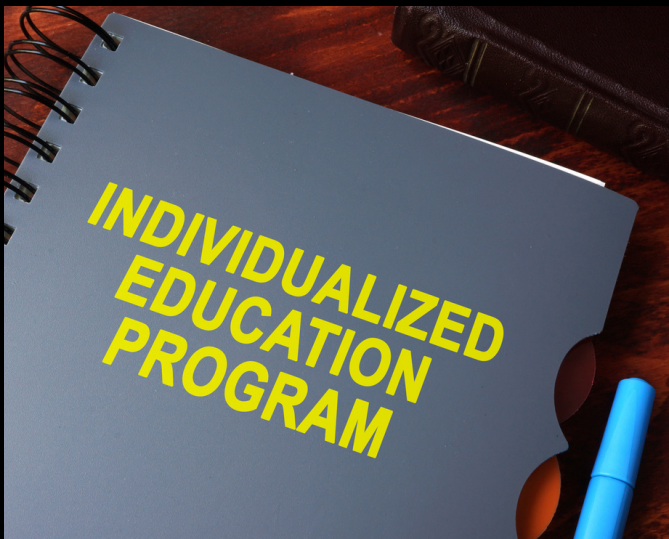
\$175 per Individual

Group Rates Available

Build Your Own Master's Equivalent

Each module is worth 3 credit equivalents

Certification Central offers a build your own Master's degree equivalent. You select modules/courses that best fit your career interests and goals. The only requirement is the SPED 900 Scholarly Capstone Portfolio (2 or 3 credit equivalent). To complete a Master's equivalent, you select 9 modules to build your personalized program of study, then at the end of your program complete SPED 900 Scholarly Capstone Portfolio.



SPED Module 1

Learner Development & Individual Learning/Cultural Differences

Beginning special education professionals understand how disabilities may interact with development and learning and use this knowledge to provide meaningful and challenging learning experiences for individuals with disabilities. Characteristics of students with learning disabilities, emotional disorders, developmental disabilities, and autism are provided.

SPED Module 2

Legal/Ethical Practices & Professional Learning

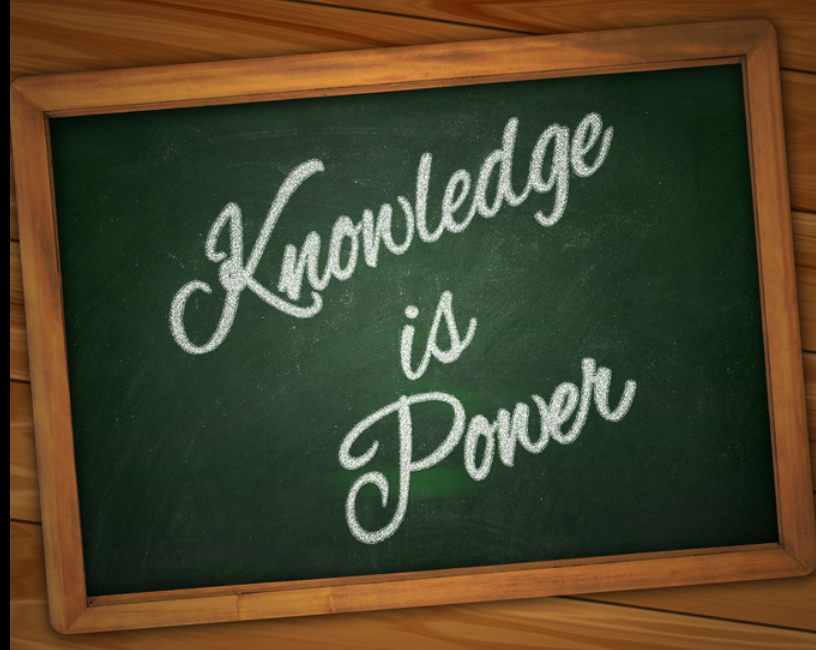
Beginning special education professionals understand the Individuals with Disabilities Education Act (IDEA) as it relates to serving students with disabilities. Professionals use foundational knowledge of the field and their professional ethical principles and practice standards to inform special education practice, to engage in lifelong learning, and to advance the profession.



SPED Module 3

Curricular Content Knowledge & IEP

Beginning special education professionals use knowledge of general and specialized curricula to individualize learning for individuals through the development of Individualized Education Programs (IEPs).



SPED Module 4

Assessment & Measurement

Beginning special education professionals use multiple methods of assessment and data sources to understand academic strengths and needs for evaluation, programming, and monitoring purposes.

SPED Module 5

Understanding and Managing Behavior

Beginning special education professional understand the communicative intent of student behavior through the conducting of a practical and comprehensive functional behavior assessment. Professionals develop behavior intervention plans comprised of functionally-equivalent interventions anchored in preventing, teaching, and reinforcing.





SPED Module 6

Instructional Planning, Strategies, & Transition

Beginning special education professionals select, adapt, and use a repertoire of evidence-based instructional strategies to advance learning of individuals with disabilities using specialized curricula and intensive interventions. Professionals plan for secondary students to successfully transition into adult life through assessments and a transition IEP.

SPED Module 7

Collaboration, Consultation, & Supervision

Beginning special education professionals collaborate with families, other educators, related service providers, individuals with exceptionalities, and personnel from community agencies in culturally responsive ways to address the needs of individuals with disabilities across a range of learning experiences. Professionals develop skills for supervising paraeducators and technicians.



SPED Module 8

Inclusive Learning Environments

Beginning special education professionals create safe, inclusive, culturally responsive learning environments so that individuals with disabilities become active and effective learners across environments.

ED Module 9

Pedagogy: Art and Science of Teaching

Beginning educators will learn the defining characteristics of effective teaching and learning based on models of teaching. Lesson plans will be designed, and assessment strategies implemented. Personalized learning, using differentiated instruction, will be understood for teaching the 21st Century learner.



ED Module 11

Math Methods: Elementary

Beginning educators will learn to teach mathematical concepts using the National Council of Teachers of Mathematics' standards, principles, and expectations. Lesson plans will be constructed and implemented based on the following concepts: place value, computation, decimals, fractions, algebra, geometry, measurement, graphing, time, money, problem solving, and reasoning. Strategies and accommodations will be learned for remediating mathematics.



ED Module 10

Reading Methods: Elementary

Beginning educators will learn to teach and assess the essential components of reading: phonemic awareness, phonics, fluency, vocabulary, and comprehension. Typical and atypical reading development will be understood to identify reading difficulties in order to apply critical elements of strategy instruction to correct reading difficulties. Dyslexia will be studied relative to characteristics/screening, educational implications, and research-based best practices.



Behavior Module 1

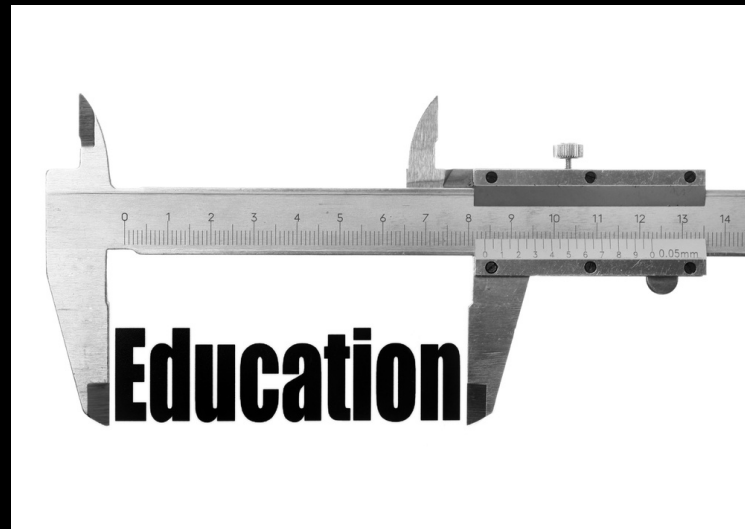
Methods & Applications for Behavior Support & Programming

This module addresses behavior-based strategies to establish, strengthen, and weaken target behaviors. Fundamental elements of behavior change are reviewed, with a focus on selecting evidence-based practices that utilize basic principles of behavior to write skill acquisition and behavior reduction plans.

Behavior Module 2

Behavior Assessment & Measurement

This module addresses the process of identifying behaviors targeted for change and the use of behavioral assessment techniques to identify, measure, and analyze behavior-environment relations for the purpose of developing functionally-based intervention strategies/plans. The assessments include screening tools, functional behavior assessment, functional analysis, ecological, social-emotional, adaptive behavior, and preference/reinforcers. A diagnostic report and behavior intervention plan are written.



Behavior Module 3

Behavior Ethics, Supervision, & Consultation



This module addresses strategies to assist in designing, implementing, and evaluating interventions to decrease challenging behaviors and increase appropriate behaviors. Candidates learn how to design and apply system approaches to support appropriate social behaviors, reduce the need for seclusion/restraint and other disciplinary practices, and integrate systems of care. Additionally, candidates will learn about ethic codes, scope of practice, and areas of competencies for behavioral practitioners in schools. Skills to be an effective supervisor and consultant are acquired to support school professionals.

Behavior Module 4

Behavior Research & Inquiry

This module focuses on how to evaluate evidence-based practices, how to access journals and databases for staying current on these practices, and how to conduct original research in educational settings using single-subject research designs. A brief experimental analysis is learned.



SPED 900

Scholarly Capstone Portfolio

The purpose of the Special Education Capstone Portfolio is for candidates to provide evidence of growth and impact in the special education discipline. The portfolio is a mechanism for self-appraisal and for critical analysis of a candidate's progress toward meeting teaching standards. The portfolio consists of narratives to answer specific questions supported with artifacts that represent understanding/application of content from the special education modules.

Customized Professional Development

Certification Central can customize professional development to meet the needs of your school, district, or unit. Onsite PD and/or online virtual PD can be arranged.

CEUs are available for licensure renewal. Transcripts are issued.



Professional Development

Wechsler Individual Achievement Test®, Fourth Edition (WIAT-4) 1 Credit Equivalent



Wechsler Individual Achievement Test® (WIAT-4) is an individually administered achievement test for use in a variety of clinical, educational, and research settings. The WIAT-4 Professional Development course is designed to teach educators how to utilize the WIAT-4 in an educational setting. Educators will gain an understanding of the features and subtests related to the WIAT-4, as well as how to administer, score (using Pearson's Q-Global), interpret results, and generate a diagnostic summary report. The lessons will focus on administering, scoring, and interpreting results for the Reading, Written Expression, and Mathematics Core Composites, and the Dyslexia Index Supplemental Composite. Subtests related to other Supplemental Composites will be introduced. Please note that you will need to obtain a WIAT-4 kit from your special education unit or district in order to take this PD.

Trauma-Informed Practices 1 Credit Equivalent



Trauma-Informed Practices is designed to teach educators how adverse childhood experiences (ACEs) impact students' neurological, physical, and emotional development. Educators will learn how to respond to students' trauma-based characteristics by identifying their mental state and corresponding brain function. The 10 essential elements of a trauma-informed school system are presented, with a focus on Individualized Education Programs and assessments. Trauma-informed interventions will be taught following three primary principles:

- 1) empowering students by meeting physical needs,
- 2) connecting in the classroom by creating relationships that matter, and
- 3) correcting behavior by rethinking classroom management.

Professional Development

Supervising Paraeducators 2 Credit Equivalent



The purpose of this training is to equip you with the knowledge and skills to be an effective supervisor for the paraprofessionals whom you work with on a daily basis. This supervisory responsibility can be one of the hardest jobs as a special education teacher. This training offers practical methods interwoven across six lessons:

Lesson 1 Supervising Paraeducators: Introduction

Lesson 2 Supervising Paraeducators in the Classroom

Lesson 3 Supervising Paraeducators: Training

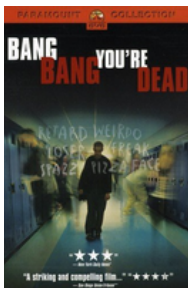
Lesson 4 Supervising Paraeducators: Role of the Supervisor

Lesson 5 Supervising Paraeducators: Evaluation

Lesson 6 Supervising Paraeducators: Professional and Ethical Issues

Educational Documentary Bundle 1 Credit Equivalent

This documentary follows Trevor, who is a troubled high school student, struggling with being bullied and is targeted by his classmates. Throughout the documentary, Trevor is suspect for anything gone wrong, even though he did not necessarily do anything. One teacher is willing to give Trevor the benefit of the doubt, and casts him in a highly controversial play about school shootings. This is the story of his fight to break free and one teacher's willingness to give a student the benefit of the doubt.



ADHD is one of the most commonly diagnosed and widely misunderstood neurological conditions in the world today, affecting nearly 10% of kids and a rising number of adults. But what if having an ADHD brain is actually an asset? The Disruptors interview many people about their ADHD.

This documentary tells the lives of students with emotional/behavioral challenges, and shows innovative educational approaches that help these students to succeed – while improving the overall school culture and climate. Who Cares About Kelsey? will make viewers reconsider the “problem kids” in their own high schools and create new conversations about an education revolution that is about empowering-not overpowering-our most emotionally and behaviorally challenged youth.



Professional Development Book Studies

Join a book study with Beth and Paige for 1 continuing education unit. We currently have 8 book studies available.



Beth Suelzle
Professional Development



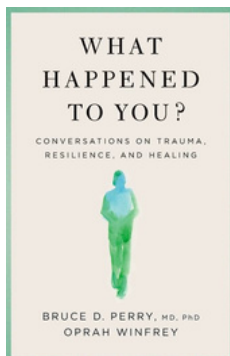
Paige Meyer
Professional Development

Join one book study of your choice, which includes 1 CEU on your transcript.

\$100

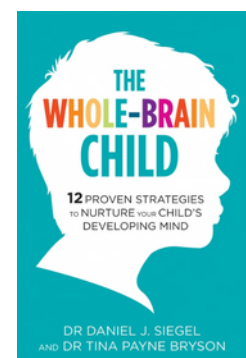
Join both book studies, which includes 2 CEUs on your transcript.

\$175

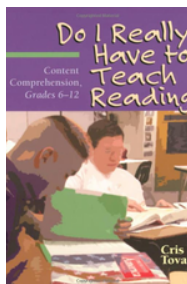


Through wide-ranging and often deeply personal conversation, Oprah Winfrey and Dr Perry explore how what happens to us in early childhood - both good and bad - influences the people we become. They challenge us to shift from focusing on 'What's wrong with you?' or 'Why are you behaving that way?' **1 Credit Equivalent**

Complete with age-appropriate strategies for dealing with day-to-day struggles and illustrations that will help you explain these concepts to your child, The Whole-Brain Child shows you how to cultivate healthy emotional and intellectual development so that your children can lead balanced, meaningful, and connected. **1 Credit Equivalent**

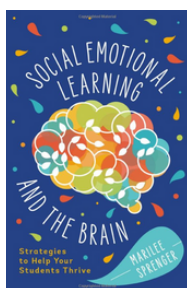
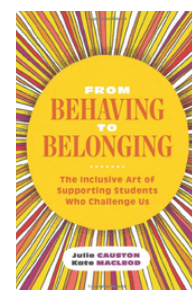


Professional Development Book Studies



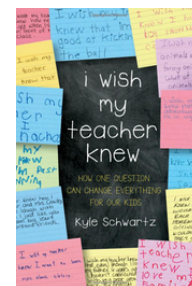
In *Do I Really Have to Teach Reading?: Content Comprehension, Grades 6-12*, author Cris Tovani takes on the challenge of helping students apply reading comprehension strategies in any subject. Tovani shows how teachers can expand on their content expertise to provide the instruction students need to understand specific technical and narrative texts. **1 Credit Equivalent**

Challenging behavior is one of the most significant issues educators face. Though it may seem radical to use words like love, compassion, and heart when we talk about behavior and discipline, the compassionate and heartfelt words, actions, and strategies teachers employ in the classroom directly shape who students are—and who they will become. But how can teaching from the heart translate into effective supports and practices for students who exhibit challenging behavior? **1 Credit Equivalent**

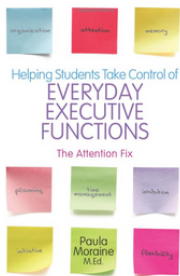


Today's teachers face a daunting challenge: how to ensure a positive school experience for their students, many of whom carry the burden of adverse childhood experiences, such as abuse, poverty, divorce, abandonment, and numerous other serious social issues. Spurred by her personal experience and extensive exploration of brain-based learning, author Marilee Sprenger explains how brain science—what we know about how the brain works—can be applied to social-emotional learning. **1 Credit Equivalent**

I Wish My Teacher Knew: How One Question Can Change Everything for Our Kids will make you laugh and cry as it details the need discovered by third-grade teacher Kyle Schwartz when she asked her class to fill in the blank of "I wish my teacher knew ____." What ultimately became a worldwide phenomenon, Swartz shares a guide of how educators can create an open, safe & supportive learning environment for every student and their individual needs. **1 Credit Equivalent**

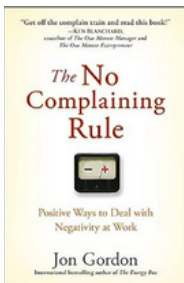


Professional Development Book Studies



Helping Students Take Control of Everyday Executive Functions presents an innovative model and approach to supporting students in executive functioning skills of attention, memory, organization, planning, inhibition, initiative, and flexibility difficulties. Through a student-centered approach that calls for educators to explore 8 influential components of working with students, Paula Moraine provides a step-by-step explanation of how these components can be used in different ways and combinations to successfully address particular areas of difficulty displayed by students of all ages. **1 Credit Equivalent**

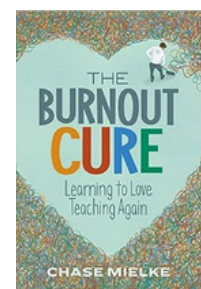
Average schools don't inspire greatness—and greatness is what our world needs if we are going to produce world-changing learners. In *Culturize*, author and education leader Jimmy Casas shares insights into what it takes to cultivate a community of learners who embody the innately human traits our world desperately needs, such as kindness, honesty, and compassion. In this book you'll learn...How to reach those who seem unreachable. What to do when students disengage or drop out of school, How to ensure your learners feel cared for and empowered, and How to create an environment where all learners are challenged and inspired to be their best. This book reads like a good conversation. One that is also compelling, affirming, reflective, and challenging. **1 Credit Equivalent**



Jon Gordon shares an inspiring and enlightening story that reveals a powerful way to tackle the biggest problem in business and life today... negativity. In his book, Gordon delivers an engaging story filled with innovative ideas and practical strategies to develop positive leaders, organizations and teams. For managers, team leaders or anyone looking to turn negative energy into positive solutions, *The No Complaining Rule* shares powerful principles and a plan to win the battle against individual and organizational negativity. **1 Credit Equivalent**

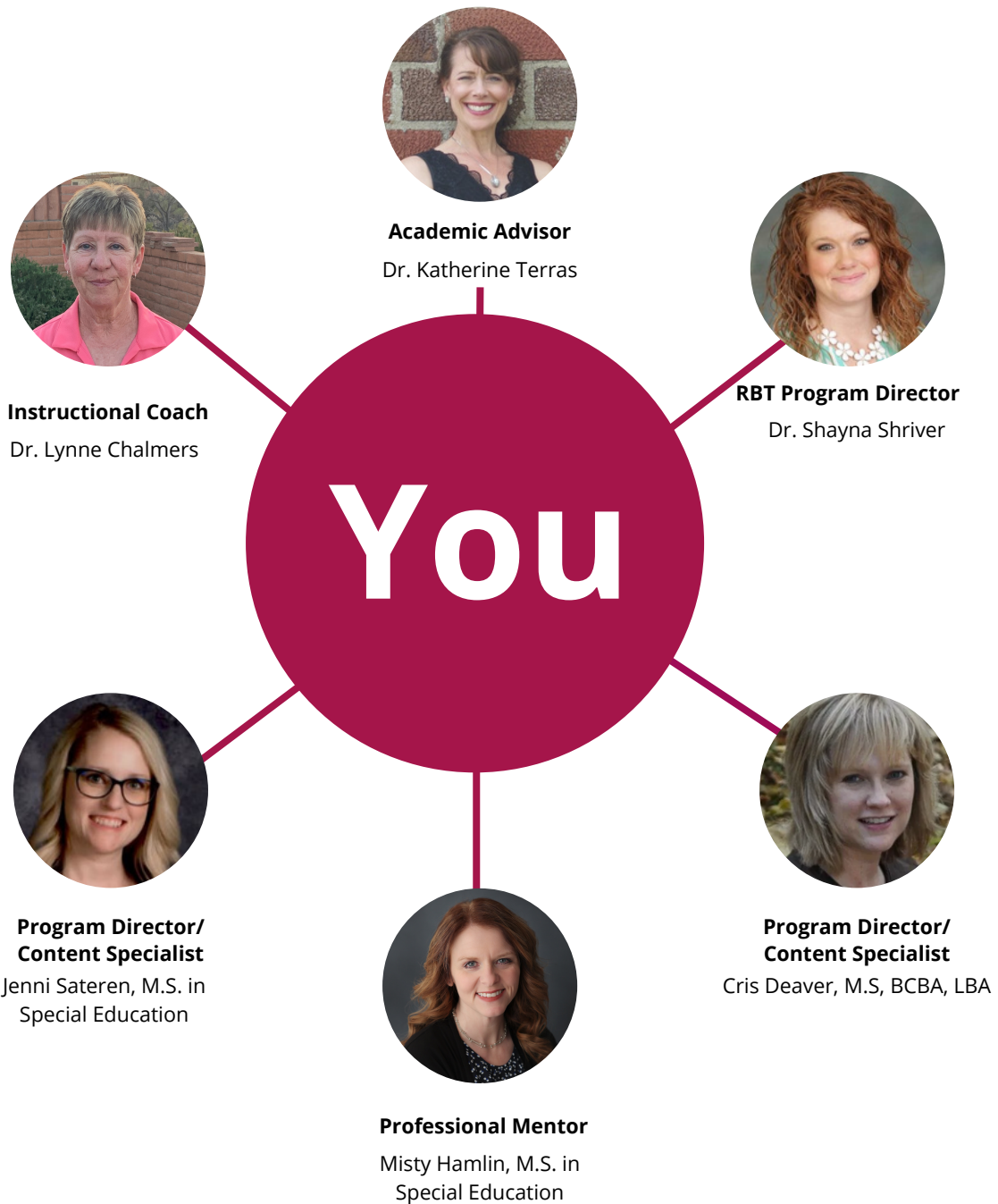
Have you ever wondered how you can muster the energy to keep a positive attitude and to love teaching day after day? Are you looking for specific ways you can thrive as a teacher and still enjoy your job? Award-winning teacher Chase Mielke uses his own research, lesson plans, and experiences with burnout to help you change your outlook, strengthen your determination to be a terrific teacher, and reignite your core passion for teaching.

Using research on social-emotional learning and positive psychology, *The Burnout Cure* explains how shifts in awareness, attitudes, and actions can be transformational for you and for your students. The book gives you specific steps related to mindfulness, empathy, gratitude, and altruism that you can use on your own and with students in lessons and activities. Using the tools in this book, you can be the best educator, so you can give your best to the learners in your care. **1 Credit Equivalent**



Your Goals are Our Goals!

YOU have **LAYERED MENTORSHIP** from the **ENTIRE TEAM** at **EVERY LEVEL.**



Meet Our Professional Team



Dr. Lynne Chalmers
Clinical Director



Jenni Sateren
Special Education
Program Director



Cris Deaver
Behavior Endorsement
Program Director



Dr. Shayna Shriver
RBT Program Director
Professional Mentor



Beth Suelzle
Professional Development
Director



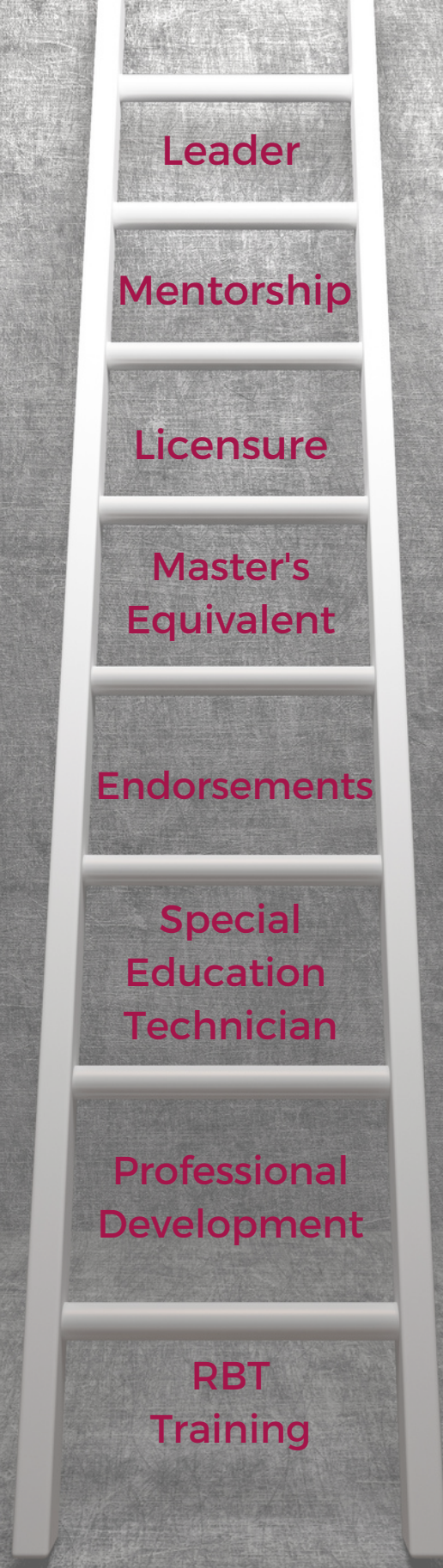
Paige Meyer
Professional Development



Misty Hamlin
Professional Mentor



Hunter Parks
Technology Consultant



Leader

Mentorship

Licensure

Master's
Equivalent

Endorsements

Special
Education
Technician

Professional
Development

RBT
Training

ACHIEVABLE

Approved + Accelerated + Affordable + Accessible

Certification Central PO Box 322 McVile, ND 58254

701-322-4429

www.certificationcentral.education